

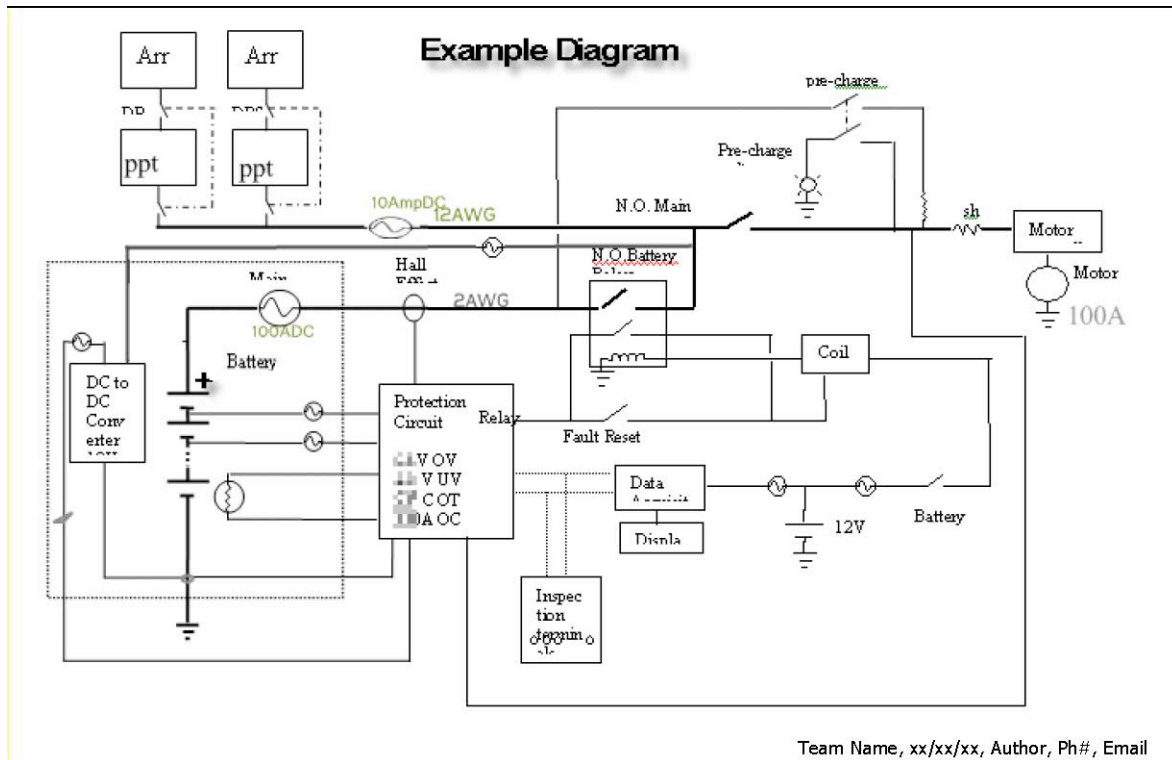


# FSGP 2011 Electrical Drawings

Due: 2011.02.01, Submit to FSGP Team Registration  
 ascteams@americansolarchallenge.org

Please include the following elements with the required Electrical Drawing:

1. Show block diagrams of the main system components: Array (5.2), Main Battery (5.3), Motor, Battery Protection (5.4), Switching (5.7), Fuses (5.6), and ventilation (5.5.D).
2. Show both high (main battery), low (dc-dc conversion) voltage bus lines
3. Show basic component values Fuse rating (Amps DC) (5.7), max battery current, power wire gauge (5.8)
4. Labels all block components, power switches (by function) (5.7), relays (5.7.A), and wire polarity.
5. Show the use of pre-charge or other power storage device (super-cap / fly wheels) other than the battery (5.3.B)
6. List or draw items that are temporarily or continuously driven off any supplemental batteries (5.3.C)
7. Show where the External Power Cut Off Switch (5.7.B) electrically isolates circuit
8. Please include the School/Organization, Team Name, Date, Author, and Contact info on diagram



Note: Preferred submission format is PDF (.pdf) with drawings in landscaped orientation.