

STAGE 3

PART B

2016 AMERICAN SOLAR CHALLENGE

Topeka, KS – Beatrice, NE

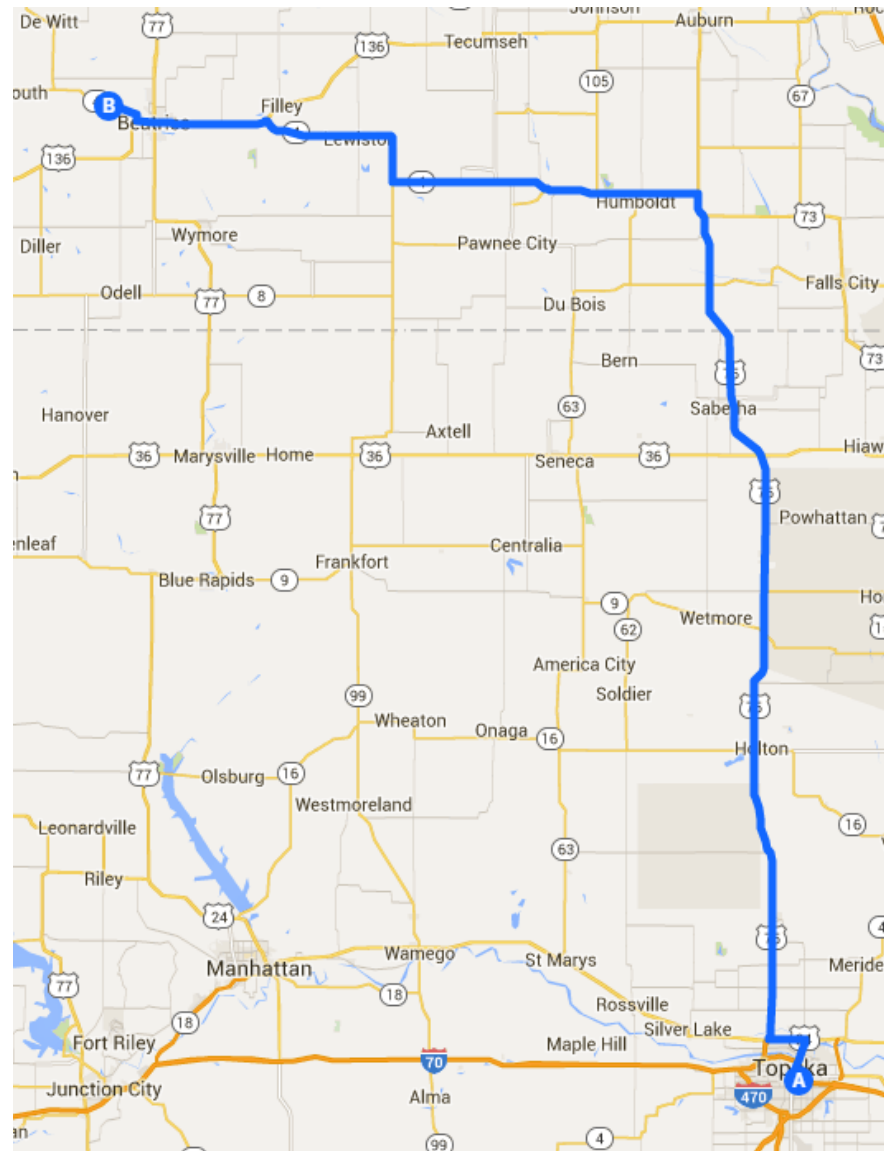
SUPPORT VEHICLE ROUTE OVERVIEW



SUPPORT VEHICLE ROUTE (NOT SOLAR CAR ROUTE!)

Step	Direction	Interval
1.	Head east on either 15 th or 17 th street out of the checkpoint	
2.	Turn left onto SE Adams St	0.3 mi
3.	Turn right to merge onto I-70 W/KS-4 W/US-40 W toward Salina	0.1 mi
4.	Take exit 358A for US-75 N. Note: Solar cars will enter US-75 approximately 2 miles ahead at Step F21	5.0 mi
	Follow the solar car route for the rest of this leg. Roads are small and single lane in either direction! Teams will be penalized for support vehicles impeding other solar car teams, so make sure your CB radios are working properly and keep an eye out for solar car caravans!	

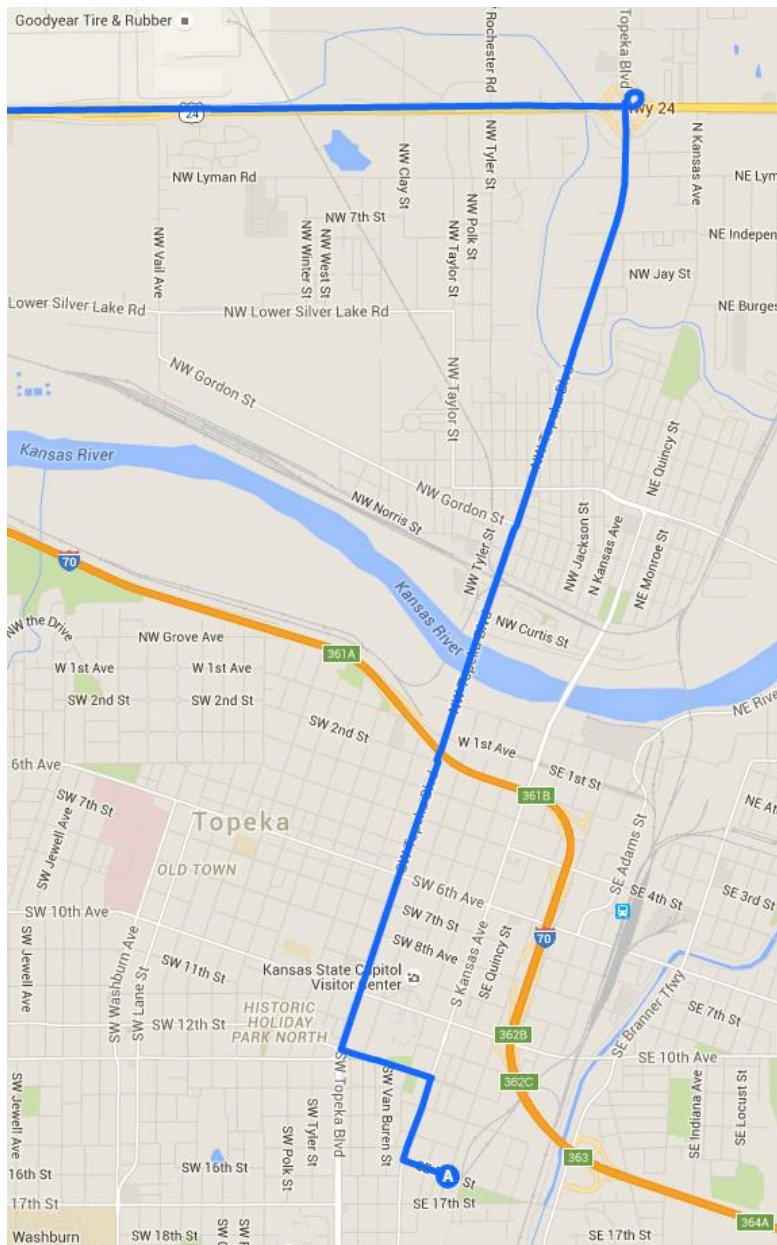
SOLAR CAR ROUTE OVERVIEW



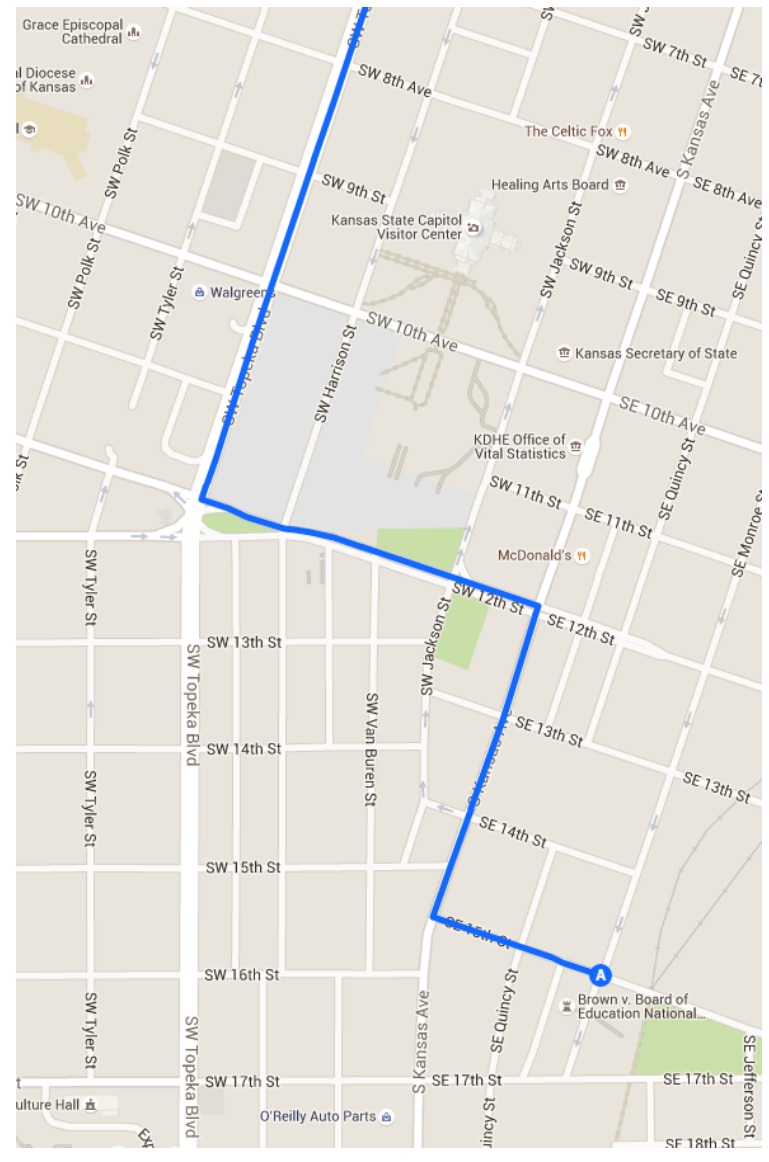


Brown v Board Checkpoint – Topeka, KS – Checkpoint Detail

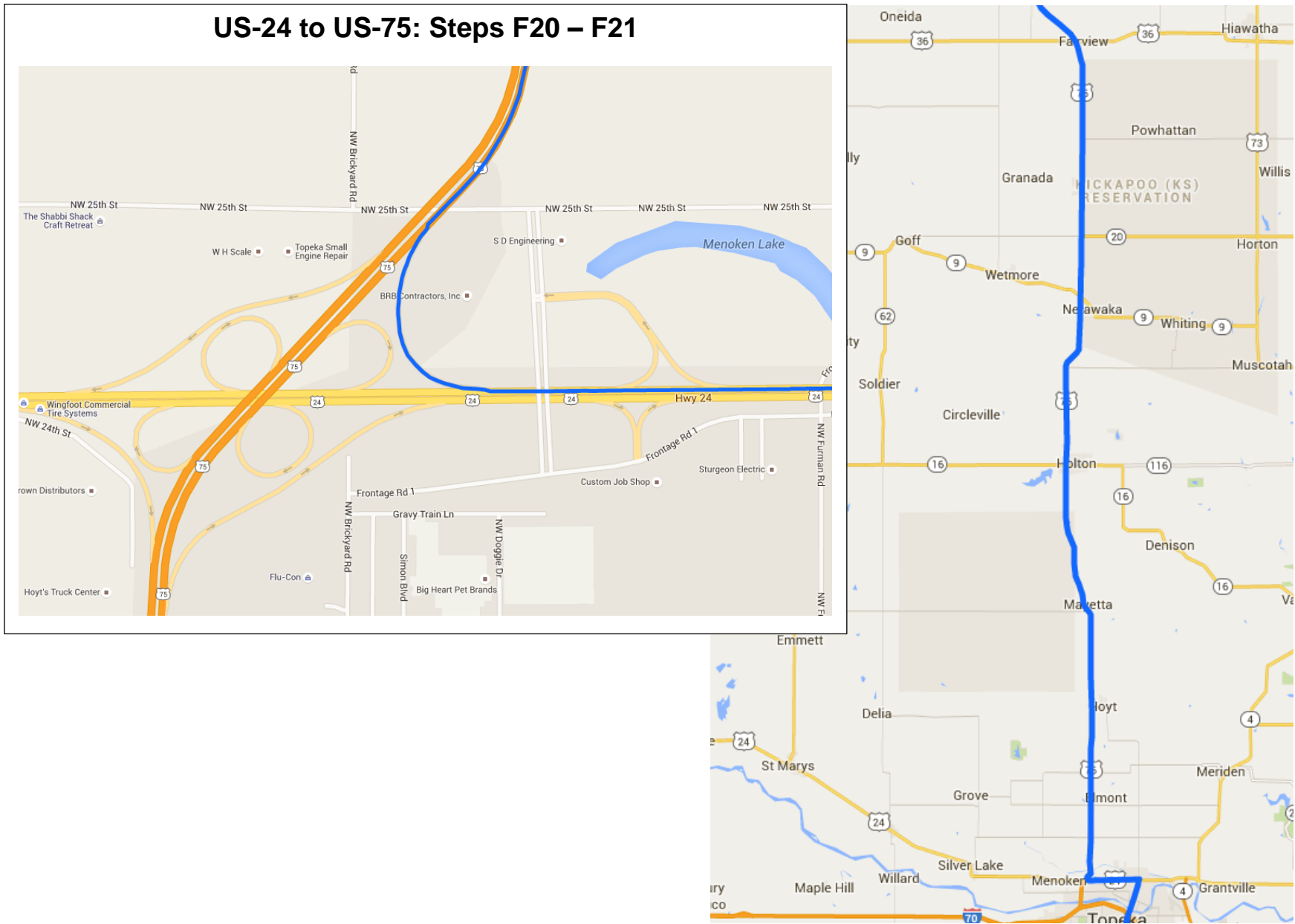




Checkpoint exit: Steps F1 – F6



Step	Trip	Int	Major Turns/Instructions	Landmarks/Notes	Ln	Spd	Shoulder	Services
F 1	0.00		Turn left out of the checkpoint onto SE 15th St		1	25	curb	
F 2	0.20	0.20	Turn right at the stop sign onto S Kansas Ave		2	30	curb	
F 3	0.50	0.30	Turn left at the SL onto 12th Ave		2	30	curb	
F 4	0.90	0.40	turn right at the SL onto SW Topeka Blvd		2	35	curb	
F 5	1.10	0.20		SL for 10th Ave				
F 6	1.30	0.20		SL for 8th Ave				
F 7	1.60	0.30		SL for 5th Ave				
F 8	1.70	0.10		SL for 4th Ave	2	35	curb	
F 9	1.80	0.10		SL for 3rd Ave	2	40	curb	
F 10	2.00	0.20		SL for 1st St, cross bridge over the Kansas River				
F 11	2.75	0.75		SL for Gordon St	2	35		
F 12	2.90	0.15		SL for Morse St				
F 13	3.00	0.10				40		
F 14	3.80	0.80		SL for Independence Ave				Full services
F 15	4.00	0.20		SL for NW Lyman Rd				
F 16	4.20	0.20	Exit right immediately after the underpass to take the US-24 West onramp	Signage towards Manhattan	2		paved	
F 17	4.40	0.20	No merging lane on US-24; exercise caution!		2	45	paved	

US-24 to US-75: Steps F20 – F21

Step	Trip	Int	Major Turns/Instructions	Landmarks/Notes	Ln	Spd	Shoulder	Services
F 18	4.90	0.50		SL for Tyler St/Rochester Rd	2	45		
F 19	5.10	0.20				60		
F 20	7.40	2.30	Exit right onto US-75 North with signs toward Holton					
F 21	7.80	0.40	Merge left onto US-75		2	70	wide paved	
F 22	8.60	0.80		NW 35th Street exit				
F 23	9.90	1.30		NW 46th Street exit				
F 24	18.30	8.40		Junction KS-214 with access to Hoyt				
F 25	24.90	6.60		Junction with 162 Road; access to Mayetta				
F 26	32.80	7.90			2	55		
F 27	33.20	0.40		Entering Holton, SL for Banner Rd	2	45	curb	Full services
F 28	33.40	0.20				35		
F 29	33.70	0.30	Merge left - right lane ends 1/2 mile ahead	SL for Fourth St/KS-16				
F 30	34.20	0.50			1	65	wide paved	
F 31	44.30	10.10		Junction with KS-9, access to Netawaka				
F 32	47.40	3.10		Abandoned Kickapoo Truck Plaza on right - large concrete pad to pull off on				
F 33	50.30	2.90		Sac & Fox Casino and Truck Stop on right	1	65	wide paved	fuel
F 34	59.70	9.40		US-36/Seneca/Hiawatha exit with access to Fairview				



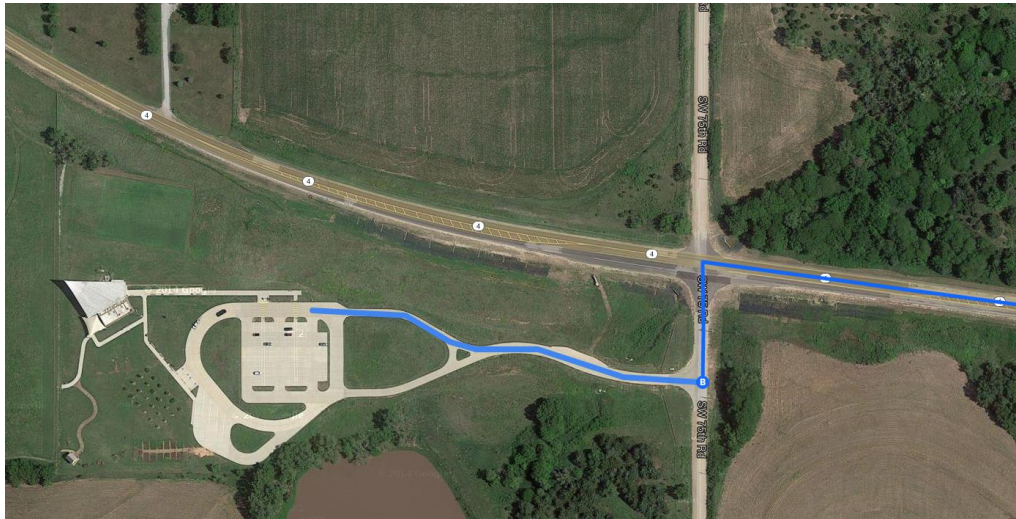
Step	Trip	Int	Major Turns/Instructions	Landmarks/Notes	Ln	Spd	Shoulder	Services
F 35	64.80	5.10		Main Street exit with access to Sabetha	1	65		Fuel, hospital
F 36	72.50	7.70		Entering Nebraska	1	60	paved	
F 37	76.80	4.30		Flashing yellow junction NE-8				
F 38	81.40	4.60				50		
F 39	81.60	0.20		Entering Dawson	1	35	curb	
F 40	81.70	0.10		RR Tracks with signage for "rough tracks"				
F 41	82.00	0.30				30		
F 42	82.20	0.20				40		
F 43	82.50	0.30			1	60	paved	
F 44	82.80	0.30		Junction with US-73				
F 45	84.90	2.10		Six Mile Café on the right - left turn is immediately ahead				
F 46	85.10	0.20	Turn left onto NE-4 West toward Beatrice and Humboldt.	No stop sign or SL - PAY ATTENTION! Small left turn lane	1	60	grass	
F 47	90.50	5.40		Entering Humboldt - Junction NE-105, big red&white water tower ahead on right		50	gravel	food, fuel, RV park
F 48	91.00	0.50				60		
F 49	98.00	7.00		Entering Table Rock		50		
F 50	98.40	0.40	Turn right to follow NE-4 at junction with NE-65 immediately after crossing a small bridge	No stop sign or SL - PAY ATTENTION. "Den's Country Meats" on left after turn	1	50		



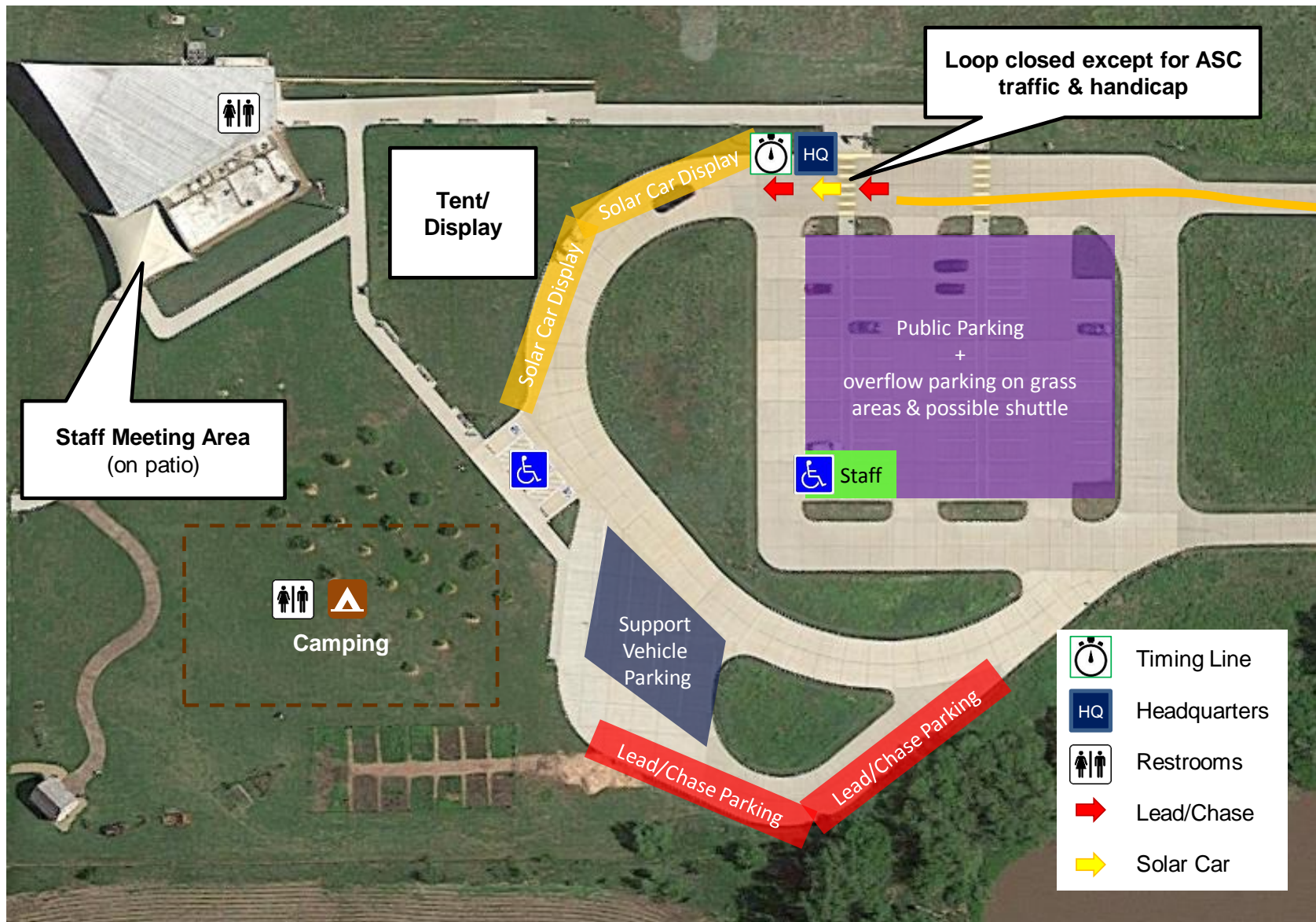
Step	Trip	Int	Major Turns/Instructions	Landmarks/Notes	Ln	Spd	Shoulder	Services
F 51	99.20	0.80			1	60	narrow gravel	
F 52	102.00	2.80		Junction NE-50				
F 53	103.40	1.40	Turn left to follow NE-4 West towards Beatrice. It's partway through a right-hand curve	No stop sign or SL - PAY ATTENTION.	1	60	grass/gravel	
F 54	103.50	0.10		Cross 620 Av (very small sign)				
F 55	112.60	9.10	Turn right at the stop sign to continue to follow NE-4 West towards Beatrice	Cross traffic does not stop. Big twin-mast antenna tower on the right corner.	1	60	grass/gravel	
F 56	119.30	6.70		NE-67A Spur on left with access to Lewiston				
F 57	124.20	4.90		Entering Virginia, population 67	1	60	grass/gravel	
F 58	128.00	3.80	Turn left at the stop sign to continue following NE-4 West towards Beatrice	Cross traffic does not stop. Junction US-136. Sinclair gas station on right after the turn	1	60	paved	fuel
F 59	135.80	7.80		Entering Beatrice	1	45	paved	full services in Beatrice
F 60	136.10	0.30		SL for Orange Blvd				
F 61	136.40	0.30			1	40	curb	
F 62	136.70	0.30			1	35		
F 63	137.10	0.40		SL for 19th St				
F 64	137.80	0.70			1	25		
F 65	137.90	0.10		SL for 8th St				
F 66	138.00	0.10		SL for 7th St				



Checkpoint: Steps F77 – F78



Step	Trip	Int	Major Turns/Instructions	Landmarks/Notes	Ln	Spd	Shoulder	Services
F 67	138.10	0.10		SL for 6th St/US-77	1	25		
F 68	138.20	0.10		SL for 5th St				
F 69	138.30	0.10		SL for 4th St				
F 70	138.50	0.20		RR tracks, cross Big Blue River				
F 71	138.70	0.20			1	35	curb	
F 72	139.50	0.80		SL for Graham St/Penrod St				
F 73	139.70	0.20	Turn right at the SL to continue follow NE-4		1	40	narrow gravel	
F 74	140.00	0.30				50		
F 75	140.90	0.90				55		
F 76	141.80	0.90		Cross small bridge over Bottle Creek				
F 77	142.90	1.10	Turn left at the sign for the Homestead National Monument Heritage Center	Look for the big building with the upswept roof to the left		45		
F 78	142.95	0.05	Turn right at the sign for the Heritage Center, follow signage and flaggers			15		



Homestead Checkpoint – Beatrice, NE – Checkpoint Detail

