

# FREYA

University of Minnesota Solar Vehicle Project



## Solar-Electric Vehicle

A spacious four-seat cruiser built with style and convenience in mind.

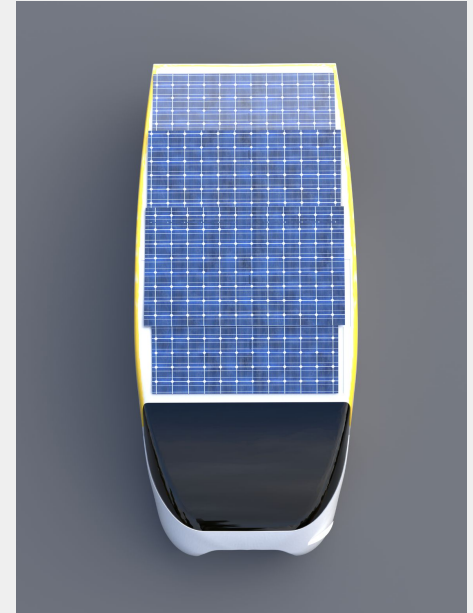
**4** person capacity

**1300** watt solar array

**490** mile range

**40** Wh/mile

<b>Battery Cells</b>	Samsung 18650 Lithium-ion
<b>Solar Cells</b>	SunPower Maxeon Silicon
<b>Motors</b>	Dual In-House Permanent Magnet
<b>Chassis</b>	Carbon Fiber Monocoque



### *Interior Features*

- Infotainment system
- Stalkless steering wheel
- Mirrorless vision system
- Luxury interior
- Cup holders
- Roomy trunk
- Passenger cooling system
- Push to talk radio system

### *Exterior Features*

- LED headlights
- Normalizing array
- Daytime running lights
- 325 cell solar array
- Protective vinyl wrap
- Aerodynamic tunnel

### *Safety Features*

- Carbon fiber chassis
- Chromoly steel roll cage
- 6-point harness seat belts
- Shatter-proof windows
- Side turn indicators

